



Bowling Park Primary Centre of Good Practice

Successful Learners
Confident Individuals
Responsible Citizens

- Go the extra mile
- Try your best
- Never give up
- Make a difference to your future

City of Bradford MDC
www.bradford.gov.uk

Our School

- Bowling Park Primary school serves a changing and mobile population. We have a very high percentage of Czech and Slovak Roma Children on roll (122). There is also a further significant number of White Eastern European children on roll. We have various other nationalities including some refugee children from Somali and The Congo.

Our School

- Bowling Park Primary school is a three form entry split site school, just under a mile away from each other.
- Ofsted is 'Good'.
- BPIP inspection was Good. 'Provision for pupils new to learning is excellent since it effectively deploys skilled adults, senior leaders regularly monitor progress and pupils consistently make accelerated progress.' BPIP June 2015.

Curriculum

What ethos and philosophy is
our curriculum built on?

Experiences

Hands on learning


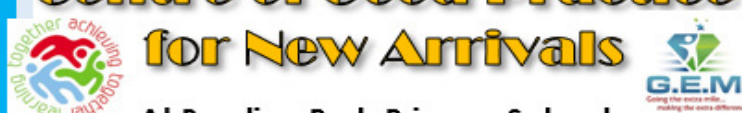
Early Years Practice

Motivational

Accelerated progress

What support we are offering

**Centre of Good Practice
for New Arrivals**
At Bowling Park Primary School



We can help you with:

Parental Involvement and Attendance

- A one hour workshop and Q+A session
- Tour our school
- Share top tips and good practice
- Look at work samples
- Electronic materials provided

Contact Sadie Cordinelev on 01274 723255 for more

Successful Learners
Confident Individuals
Responsible Citizens

City of Bradford MDC
www.bradford.gov.uk

All support packages can be tailored to your needs.

Centre of Good Practice for New Arrivals



At Bowling Park Primary School



We can help you with:

Phased Approach to teaching New to English children

Bespoke package of support to set up a Phased
Approach

Two hour workshop and Q+A session

Tour our school, sharing good practice and work
samples

Electronic materials provided

Contact Sadie Cordingley on 01273 723255 for more

Successful Learners

Confident Individuals

Responsible Citizens



City of Bradford MDC

www.bradford.gov.uk

All support
packages can
be tailored to
your needs.

Centre of Good Practice for New Arrivals



At Bowling Park Primary School

We can help you with:

Teaching and Learning Strategies



Workshops on:

- Curriculum – experiential learning and experiences.
 - Planning for guided reading and topic lessons.
- English planning – sequence of learning to maximise progress in reading, writing and grammar.
 - Clicker training.

All workshops include a tour of school, shared work samples and
electronic materials

Contact Sadie Cordingley on 01273 723255 for more information.

Successful Learners

Confident Individuals

Responsible Citizens



City of Bradford MDC

www.bradford.gov.uk

All support
packages can
be tailored to
your needs.

Publicity

- **Mail shots** (covering letters with flyers twice). Initially just BD5 Schools and then we sent them to Bradford East Schools
- **BSO webpage**
- **Blog**
- **Open day**
- **Weekly round up news from BSO**

Publicity

BSO webpage

Bowling Park Primary School – New to English Hub

Successful Learners

Confident Individuals

Responsible Citizens



City of Bradford MDC

www.bradford.gov.uk



We believe that we are a unique school. We are a 3 form entry primary, with just under 700 pupils, situated on 2 sites that are approximately one mile apart. We have a fantastically varied school population who come from many different backgrounds, cultures and faiths. We are very proud of this and constantly strive to celebrate and develop our school as a happy, nurturing and respectful place for children to learn.



"The staff at Bowling Park Primary were extremely friendly and informative. I feel that my confidence regarding supporting EAL pupils has increased greatly. Thank you!"

York St John Student – February 2016



Bowling Park Primary School is very proud to have been awarded the Centre of Good Practice for New Arrivals in Schools.

We can offer schools, free of charge, support in various areas of welcoming children who are new to English, including teaching and learning strategies, curriculum, parental involvement and attendance.

Please click the link below to view our booklet.

Key contact at school is Gill Camm

Tel 01274 770270 gill.camm.bp@gmail.com



Publicity

BLOG webpage

The screenshot shows a web browser window with the address bar displaying `newtoenglish.bowlingparkprimary.net`. The page header features the title "NEW TO ENGLISH" with the tagline "Going the Extra Mile". Below the header is a navigation menu with links for "NTE Home", "Phase 1 - Mr Roe", "Phase 2 - Mrs Crossley", "Phase 3 - Miss Chmiet-Mentel", and "Phase 3 - Miss Shaw". A large banner image depicts a stylized sun with rays in red and white. The main content area includes a post titled "A year with New to English" dated July 2nd, 2015, by misspatrut. The post features a video player with a thumbnail showing the text "A Year with New to English" on a chalkboard. To the right of the video are icons for heart, clock, and share. Below the video is a "Subscribe to our Feed via RSS" button. Further down, there is a "Recent Posts" section listing several articles with arrows pointing to them. At the bottom, there are sections for "Categories" (listing "esafety" and "Uncategorized") and a "Calendar" for June 2016 showing the days of the week (M T W T F S S).

newtoenglish.bowlingparkprimary.net

NEW TO ENGLISH

Going the Extra Mile

NTE Home Phase 1 - Mr Roe Phase 2 - Mrs Crossley Phase 3 - Miss Chmiet-Mentel Phase 3 - Miss Shaw

A year with New to English

Jul 2nd, 2015 by misspatrut. No comments yet

A year with New to English
from Bowling Park Primary School

A Year with
New
to English

06:02 HD :: vimeo

Subscribe to our Feed via RSS

Recent Posts

- Keasden Head Farm
- Making Pizzas
- How to make a disgusting sandwich...
- Building a snowman...
- What is Diwali?
- Searching for The Gruffalo
- A year with New to English
- Gypsy Award Ceremony June 2015
- Slovak téma list áč" New to English
- Phase 3 Topic Letter

Categories

esafety
Uncategorized

Calendar

June 2016

M	T	W	T	F	S	S
---	---	---	---	---	---	---

Publicity

Open Morning: 9th June 2016

Successful Learners

Confident Individuals

Responsible Citizens



Bowling Park Primary School Centre of Good Practice

Invitation

BOWLING PARK PRIMARY SCHOOL INVITE YOU TO
AN OPEN MORNING ON THURSDAY 9TH JUNE AT 9AM

This is to share with you what a Centre of Good Practice is and what support we can offer your school in supporting New to English arrivals.

The morning will include a short presentation, visit to our N2E classrooms and an explanation of what support packages are available. The morning will finish around 11.30am, but you are more than welcome to stay and chat to our N2E teachers.

Please R.S.V.P. to Gill Camm on gill.camm.bp@gmail.com or 01274 770270
Thank you

City of Bradford MDC

www.bradford.gov.uk

Newby Primary School

Sandy Lane Primary School

St Joseph's Primary School

Westminster Primary School

St Matthews C of E

Rainbow Primary School

Lilycroft Primary School

Bankfoot Primary School

Crossley Hall Primary School

Horton Park Primary School

**13 People attended
From 10 different
schools**

Open Morning: 9th June 2016

- 9am welcome
- Presentation that included: what a Centre of Good Practice is, why we were chosen and details of our N2E Curriculum.
- Tour of the provision in place and then details of what we can offer as a school.
- Q&A session with all the N2E team
- Feedback was unconditionally positive and all schools are interested in further support.

Support from Bowling Park

Name of School	Date	What support was delivered	Impact
St John's University	8.2.16	Full day with Sadie and N2E team. Presentation, observation and workshop.	
Water Primary School	13.4.16	Informal conversation with Sadie.	Very interested and is looking to book on to training modules.
Saints C of E Primary School	25.4.16	Informal conversation with Sadie.	All Saints have their own systems in place which Catherine Paradine had set up – so they don't think we can offer anything further.
Direct students	26.4.16	Full day with Sadie and N2E team. Presentation, observation and workshop.	
Croft Primary School	25.5.16	Informal conversation with Sadie.	Mag was very interested and is planning to book on to the training modules.
EN MORNING	9.6.16	15 staff members from 10 different schools attended.	A number of schools very interested in booking training modules.

Future Bookings:

Name of School	Date	Support booked
St. Minster Primary School	21.6.16	Full training for two modules
St. Walds Primary School	4.7.16	Informal conversation with Sadie, as school was closed for the open morning
St. John Primary School	To be confirmed	Sadie to go into school to help them set up the phases. Definitely interested in using our support.
St. Matthews	To be confirmed	They definitely want our help but are waiting for decisions on next year before they know what they want specifically and who.

Future Plans:

- Contact the schools who came to the Open Morning in the Autumn Term to see if we can tailor our support to meet their specific needs.
- Close support work to start with Rainbow and St Matthews. Both schools plan to use Bowling Park's support extensively in the new academic year.
- Host another Open Morning in Autumn Term to promote services and support.
- Continue to develop menu of support available to schools.
- Continue to promote support and services throughout next academic year.



Horton Grange Primary School

New to English Hub

Supporting new arrivals and their families.

Our School Journey

What we have learned.

Where we are now.

Our future journey.

How can we support other learning environments and practitioners?

Support with new arrivals.

Supporting families.

Intervention and class based learning.

Contact Details

Horton Grange Primary School

Spencer Road

Bradford

BD7 2EU

Tel: 01274 573287

Email:

lynda.salthouse@hortongrange.bradford.sch.uk



New to English Centre of Good Practice

City of Bradford MDC

www.bradford.gov.uk



THE SOUTHFIELD GRANGE TRUST

Our NTE Hub team



Tetiana Sprowell - Leader of New to English

Support and development focus:

Teaching and Learning



Sadie Williams - SLE for Safe guarding and Child protection

Support and development focus:

Child Protection for Roma Communities



Julius Budo - Roma Pastoral Support Officer

Support and development focus:

Employing adults from new communities, working with parents, developing out of hours activities



Nasmin Din - Community Development Manager

Support and development focus:

Working with parents, developing out of hours activities



Michal Paulukiewicz - Roma Parental Support Officer

Support and development focus:

Self ascription, working with parents, developing out of hours activities



Sally Wike - Assistant Headteacher Pastoral

Support and development focus:

NTE strategy, behaviour, attendance and support

Update so far...

Launch of NTE Hub – February 2016

Developed a programme of support:

- 1) Admissions process and self-ascription
- 2) Working with parents
- 3) Teaching and learning
- 4) Behaviour (anti-bullying and inclusion)
- 5) Employing adults from new communities
- 6) Developing out-of-hours activities
- 7) Child Protection for Roma communities

Expanded staff capacity to deliver outreach work

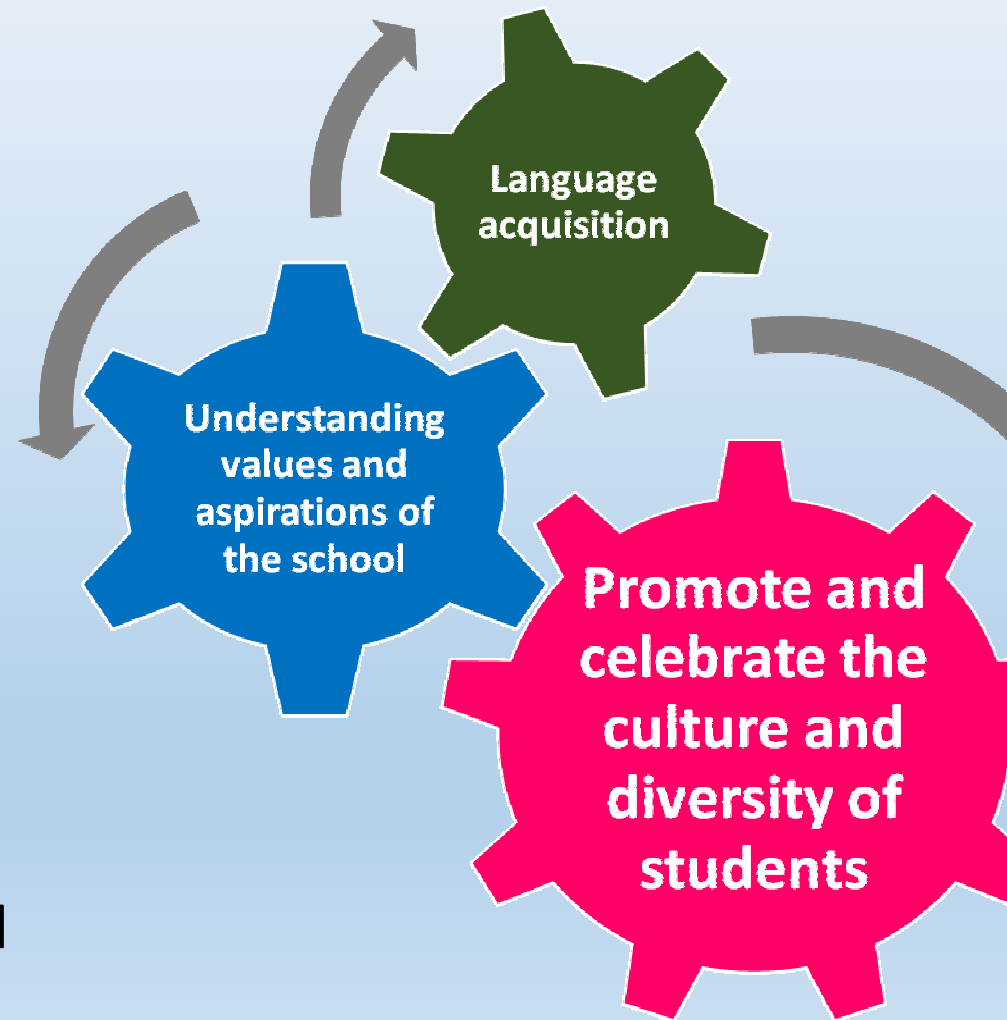


Our Approach

2 different home languages spoken
across the Campus.

Supporting students and their families to **access**
and understand the values and
aspirations of our school is key to the
success and wellbeing of students who are new to
the UK.

We **promote and celebrate the culture**
and diversity of our students and are enriched
by their being part of our community.



Celebrating culture and diversity

New to English at Southfield Grange



**Promote and
celebrate the
culture and
diversity of
students**

Understanding the values and aspirations of the school

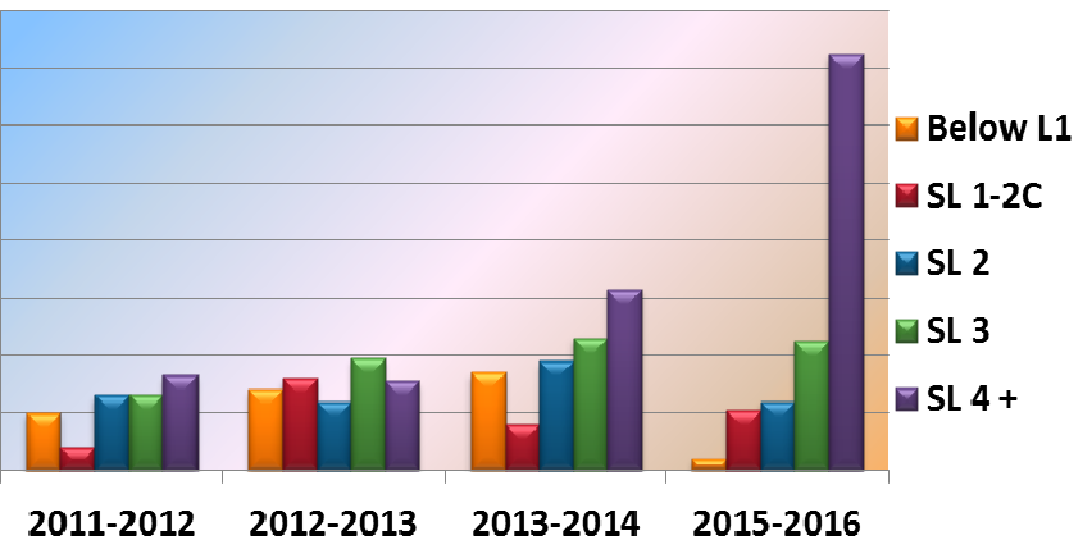


- Building trust in communities
- Working with parents
- Out of hours activities
- Support for families

Language acquisition



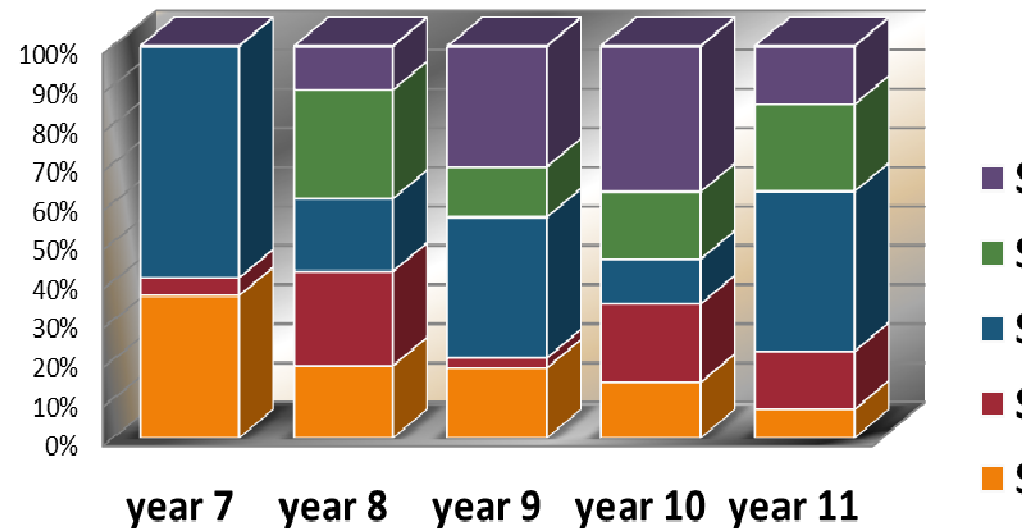
Data indicating the changing dynamics of progress in Step Levels



STEP level Breakdown 2015-2016

SL 1-4: New to English
 SL 5-6: Advanced Bilingual learner

SL 1-2 Below
 SL 3 NC I
 SL 4 NC I
 SL 5 NC



Outreach work



BUTTERSHAW
BUSINESS & ENTERPRISE COLLEGE



Bradford Academy



Key messages for school leaders

- Anticipate for the future – **STAFFING STRUCTURES**
- Build capacity to deliver quality teaching and learning for this group of students - **recruitment**
- Promote and embrace culture and diversity –
 - *understanding Roma culture*
 - *developing out of hours activities*
- Ascription process – **early impact**